

Android Tablet

Controls & Settings guide

Creating restricted profiles limits the access your children have to content on Android Tablets and restricts in-app purchasing.



What do I need?

You will need your Google account email and password for the device

Restrictions you can apply



Apps Access



Browser Access



In App purchasing



Inappropriate content



Media streaming



Online games



Sharing Data



Sharing location



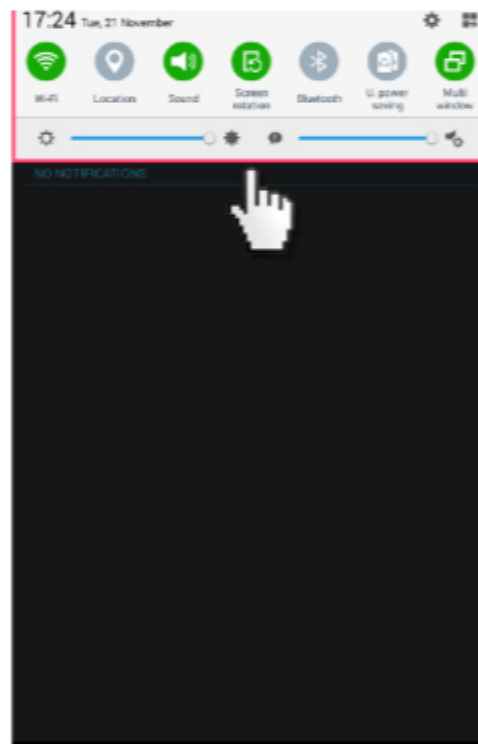
Social networking

Step by Step instructions

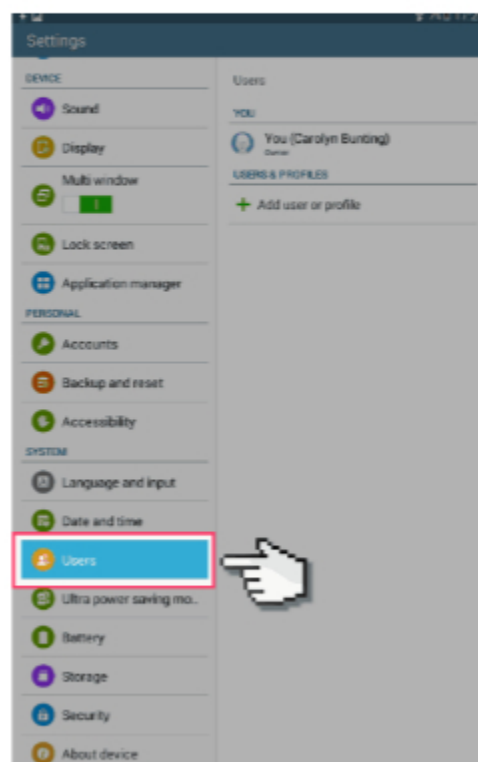
1. Go to the tablet home screen



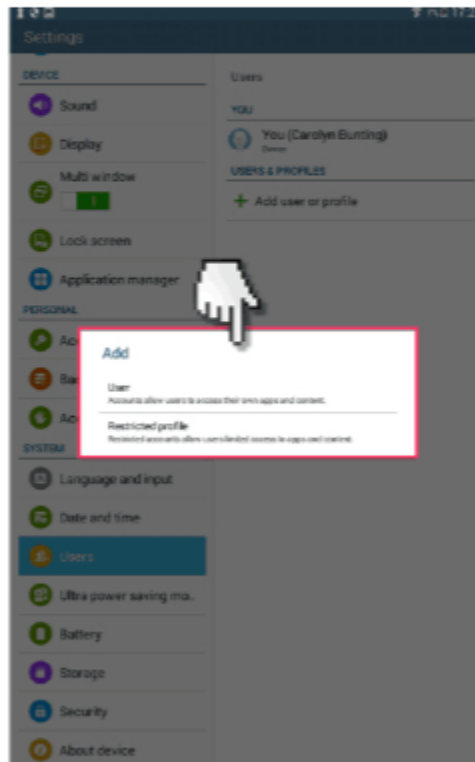
2. Swipe down from the top of the screen to see the settings panel. Select the cog icon in the top right corner to open the settings menu.



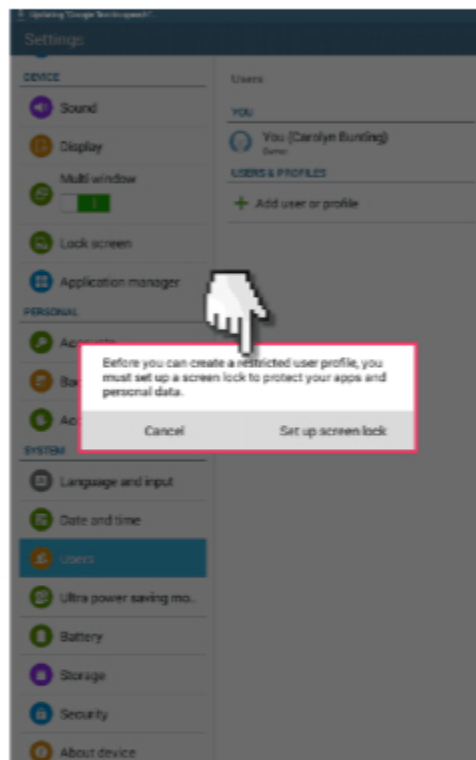
3. scroll down and select 'Users'.



4. Add new 'Restricted User'



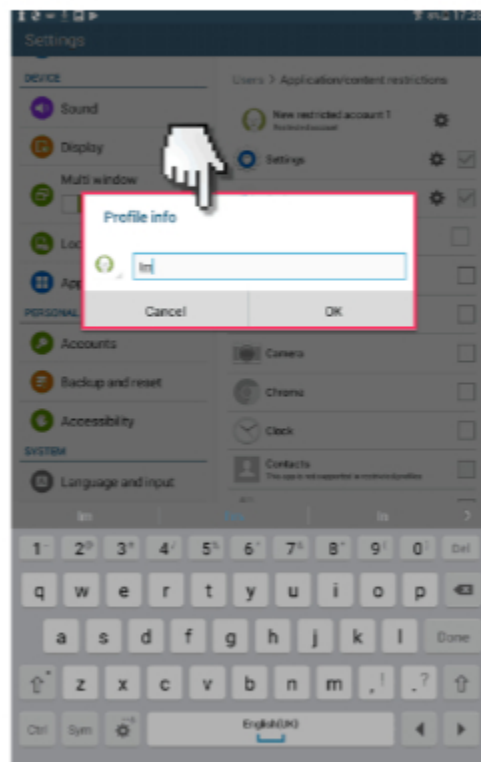
5. Next create a screen lock and password.



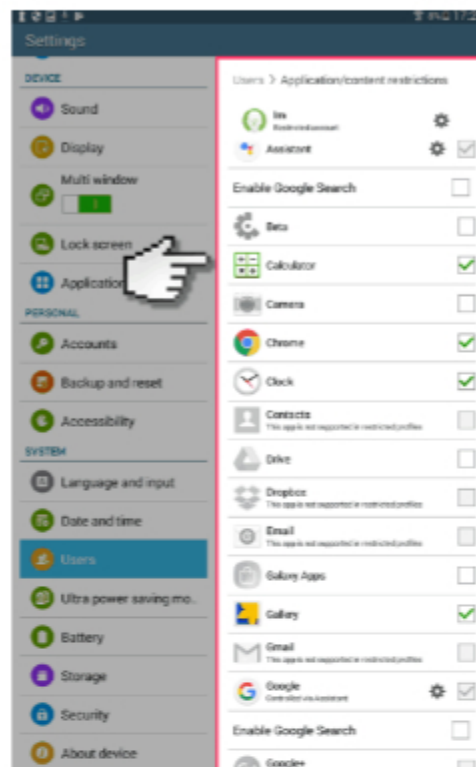
6. Select the password style.



7. Next, choose the profile name.



8. Then once back in the users menu panel, select the new restricted user and select all the apps you want restricted access too.



9. You'll now need a password every time you want to log into the unrestricted user so the child can't access restricted content.

